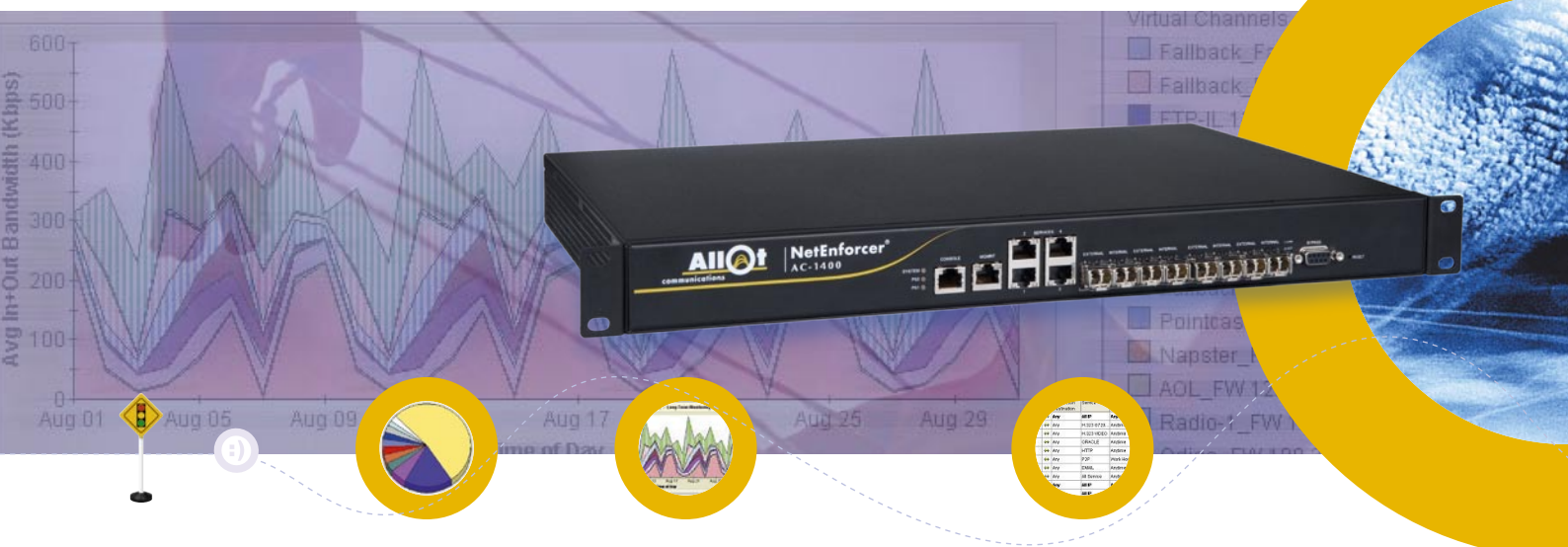


NetEnforcer® AC-1400 Series

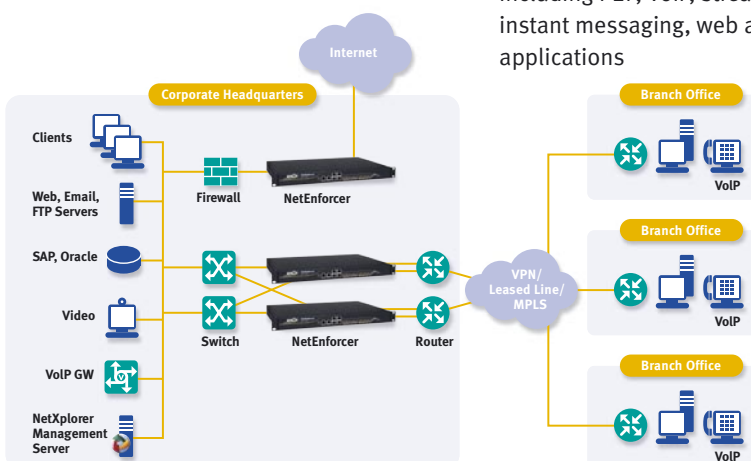
2 Gbps Bandwidth Management Device



Allot NetEnforcer® AC-1400 is designed to manage Internet traffic on multiple Ethernet links at speeds of up to 2 Gbps. Providing real-time monitoring, policy enforcement and traffic steering, this flexible device helps operators control bandwidth utilization and costs while ensuring quality of experience (QoE) for all network users.

Main Features

- High port density per unit:
 - 8 ports of 10/100/1000 Ethernet for network connectivity
 - 4 ports of 10/100/1000 Ethernet for connectivity to external services, cascading and high-availability
- Operation speeds of 45, 100, 200, 400 Mbps and 1 Gbps (full duplex)
- Powered by Allot's dynamic actionable recognition technology (DART), which provides granular awareness of subscriber, application and network topology traffic
- DART's extensive signature library accurately identifies hundreds of Internet applications and protocols, including P2P, VoIP, streaming, gaming, instant messaging, web and business applications
- Policy-based traffic steering to external network and subscriber services
- Managed by Allot NetXplorer management system, providing centralized reporting, provisioning, alerting and policy control
- Continuous traffic monitoring for fast troubleshooting, usage tracking and capacity planning
- Easy upgrade to higher speeds and richer QoS policies using the same platform
- Proactive, early-warning mechanisms provide automatic alarms concerning network events and the ability to trigger corrective actions
- Detection of traffic anomalies and mitigation of network attacks and security threats by immediate isolation of malicious traffic, without interrupting regular traffic
- Fail-safe performance with external hardware bypass and full redundancy schemes



Specifications

The NetEnforcer AC-1400 is currently available in a versatile AC-1440 model serving a range of network configurations and needs.

		AC-1440
Capacity	Number of Connections/Flows	2,000,000 / 4,000,000
	Throughput	2 Gbps (1 Gbps, Full Duplex)
	Lines/Pipes/Virtual Channels	256 / 40,000 / 80,000
	No. of Subscribers	160,000
Interfaces and Connections	Management Interface	10/100BASE-T
	Network Interfaces (Internal / External)	8 x 1000BASE-T/SX/LX
	Cascading/Service	4 x 10/100/1000 Copper
	Console Port	Serial, RJ-45 Connector
Examples of Application/Protocol Signatures Supported	P2P	Including BitTorrent, eDonkey, Ares, Gnutella, Thunder, Poco, Winny
	VoIP	Including Windows Live Messenger Voice, SIP, Skype, Yahoo Messenger Voice, GoogleTalk, Fring
	Gaming	Including World of Warcraft, Final Fantasy, Guitar Hero, Second Life, QQ Games, Lineage, CounterStrike
	Instant Messaging/Chat	Including Windows Live Messenger, QQ, Yahoo Messenger, ICQ, STUN
	Web	Including HTTP Browsing, HTTPS, Mobile browsers
	Streaming	Including YouTube, RTMP, QQ live, PPStream, DailyMotion, HTTP Streaming, HTTP Audio, NetFlix, Facebook Streaming
Networking Standards	Traffic Encapsulation	Including L2TP, MPLS, PPPoE
Product Options	Monitoring	Yes
	QoS Enforcement Levels	45, 100, 200, 400 Mbps and 1 Gbps (full duplex)
	Redundancy	Active (1:1, 1+1)
Management	NetXplorer Centralized Management	Yes
	NetXplorer Long-term Reporter	Yes
	NetXplorer Real-time Reporter	Add-on license
	Allot Subscriber Management Platform	Fully integrated with Allot SMP for subscriber-application control
Dimensions	Size	Standard 1U by 19" rack mount
	Weight	9.1 kg (20 lb)
	Bypass Unit	External, 1U, 19" rack mount
Power	Input (AC/DC)	100 to 240 VAC ; -48 VDC
	Power Supply Units	2 (Load Sharing)
	Redundancy for PSUs	1 + 1
	Power Consumption	100W
	Heat Dissipation	341 BTU/hour
Safety and Certifications	Safety	UL 60950-1/ CSA CS22.2 60950 (ITE) EN 60950-1 ITE
	Emission	EN 55024:1994; A1:2001; A2:2003 Immunity for ITE EN 61000-3-2:2001 Harmonic Emissions EN 61000-3-3:1995; A1:2000 Voltage Fluctuations EN 55022:1998; A1:2000; A2:2003 Emissions for ITE VCCI FCC Part 15, Sub-Part B

About Allot Communications

Allot Communications (NASDAQ: ALLT) is a leading provider of intelligent IP service optimization solutions for DSL, wireless and mobile broadband carriers, service providers, and enterprises. Allot's rich portfolio of hardware platforms and software applications utilizes deep packet inspection (DPI) technology to transform broadband pipes into smart networks that can rapidly and efficiently deploy value added Internet services. Allot's scalable, carrier-grade solutions provide the visibility, security, application control and subscriber management that are vital to managing Internet service delivery, guaranteeing quality of experience (QoE), containing operating costs, and maximizing revenue in broadband networks.

www.allot.com info@allot.com

- **Americas:** 300 TradeCenter, Suite 4680, Woburn, MA 01801 USA · Tel: (781) 939-9300 · Toll free: 877-255-6826 · Fax: (781) 939-9393
- **Europe:** NCI – Les Centres d’Affaires Village d’Entreprises ‘Green Side’, 400 Avenue Roumanille, BP309, 06906 Sophia Antipolis Cedex, France · Tel: 33 (0) 4-93-001160 · Fax: 33 (0) 4-93-001165
- **Asia Pacific:** 6, Ubi Road 1, Wintech Centre 6-12, Singapore 408726 · Tel: 65 6841-3020 Fax: 65 6747-9173
- **Japan:** Kanda Surugadai 4-2-3-301, Chiyoda-ku, Tokyo 101-0062 · Tel: 81 (3) 5297-7668 · Fax: 81(3) 5297-7669 · www.allot.co.jp
- **Middle East and Africa:** 22 Hanagar Street, Industrial Zone B, Hod-Hasharon, 45240, Israel · Tel: 972 (9) 761-9200 · Fax: 972 (9) 744-3626

